

# BATHROOMS

THE ULTIMATE BATHROOM RENOVATION GUIDE

FROM THE  
TEAM AT

**home  
beautiful**

**MAKEOVERS**  
*made easy*

Expert advice,  
planning tips  
& top trends

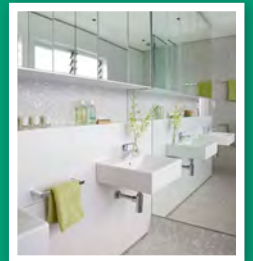
**140+**

**BEST BUYS**

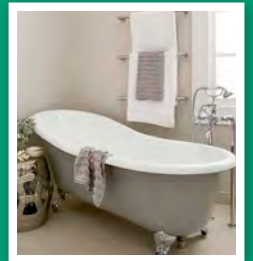
baths, basins,  
showers, tapware,  
tiles & vanities



**25** *inspiring*  
**BATHROOMS**



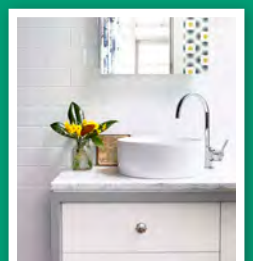
MODERN GLAMOUR



CLASSIC LUXURY



RUSTIC RETREAT



COMPACT CHIC



case study  
*family*



*nuzzle dazzle*

A SMATTERING OF SPARKLE AND AN INTENSELY  
PINK SCHEME CREATE AN IRRESISTIBLE RETREAT

WORDS ANNA McCLELLAND STYLING RUTH WELSBY PHOTOGRAPHY MARCEL AUCAR



**NOT FOR THE FAINT-HEARTED, THIS HOT PINK**

bathroom has definite va-va-voom. Glittering mosaics coat the floor and walls, with white plantation shutters, a freestanding bath and white gloss tiles in the shower to provide relief. "When choosing a high-voltage colour, go for the one that stops your heart the first time you look at it," advises interior designer Carolyn Burns-McCrave. "If you need to talk yourself into it, it's not the right hue for you." Owner Joanne and her two teenage girls fell head over heels for the pink mosaics Carolyn suggested. "I love the strength of the colour," says Joanne.

The room's size presented a few design challenges. "I replaced the built-in bath with a freestanding version because being able to see beyond the bath to the corners of the room actually makes the space feel bigger," Carolyn explains. Other space-saving tricks include a floating vanity, frameless shower screen and expansive mirror-fronted cupboards. "The mirrors reflect the outside, making the room feel bigger and brighter," adds Joanne, who loves their storage capacity. "In a girl's bathroom you can never have too much storage." >



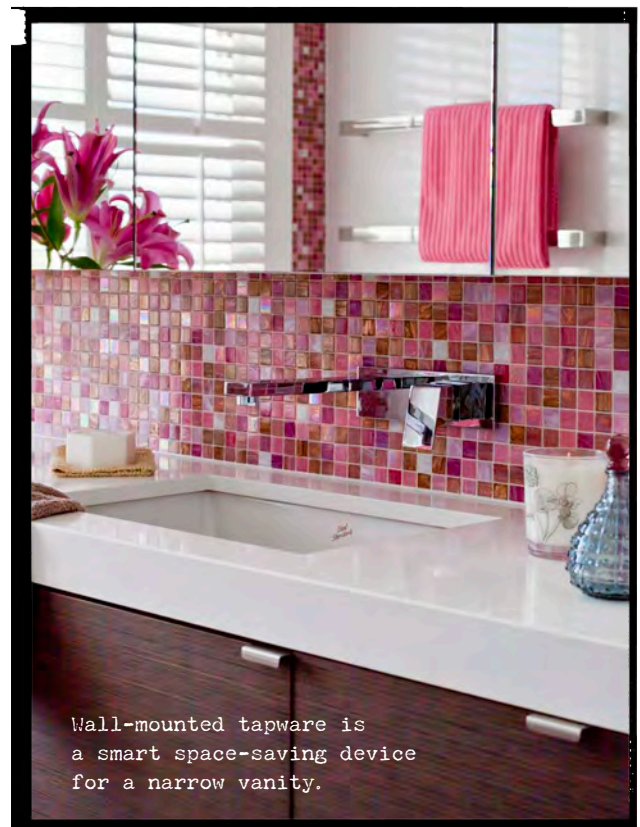
The vanity features open shelves at one end to reduce its visual bulk.

EXPERT TIP: Using the same *vibrant* tone of mosaics on

the floor and walls creates an *illusion* of endless room



A floor-mounted bath filler makes a strong design statement.



Wall-mounted tapware is a smart space-saving device for a narrow vanity.

01  
02  
03  
04  
05  
06  
07  
08  
09  
10  
11  
12  
13  
14  
15  
16  
17  
18  
19  
20  
21  
22  
23  
24  
25

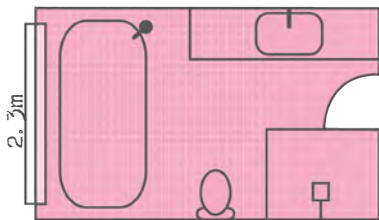


The custom vanity in oak veneer and white Caesarstone contrasts with the bright pink.



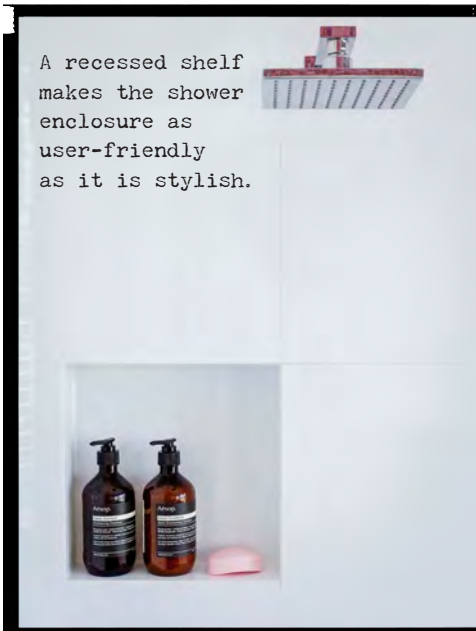
EXPERT TIP: Use *existing* features wherever possible. Here, original shutters,

the ventilation system and downlights were *retained* to keep costs down



2.8m

A recessed shelf makes the shower enclosure as user-friendly as it is stylish.



### *the details*

**BASIN:** Try Ideal Standard 'Active' undercounter basin, Reece.

**BATH:** Kado 'Lure' freestanding bath, Reece.

**BENCHTOP:** Caesarstone in Organic White.

**JOINERY:** 'Allure Oak' timber veneer, Laminex.

**SHOWER SCREEN:** Semi-frameless double-swivel shower screen, Hawthorn Shower Screens.

**TAPWARE:** Phoenix 'Kubus' wall-mounted basin set with plate, bath spout & mixer and square overhead shower rose, Reece.

**TILES:** Bisazza 'Oleandro' mix 8 mosaic, De Fazio Tiles; 'Marc' white gloss 480mm x 300mm, Signorino Tile Gallery.

**TOILET:** Ideal Standard 'Tonic', Reece.

**TOWEL RAIL:** Kado 'Quad' towel rail, Reece.

**VANITY HARDWARE:** JP11/P joinery pulls in polished stainless steel, Index + Co.

CONTACT: Burns McCrave Design, (03) 9894 0586, burnsmcgrave.com.au. [Stockists, page 114.](#)



case study  
*modern*

# *purple reign*

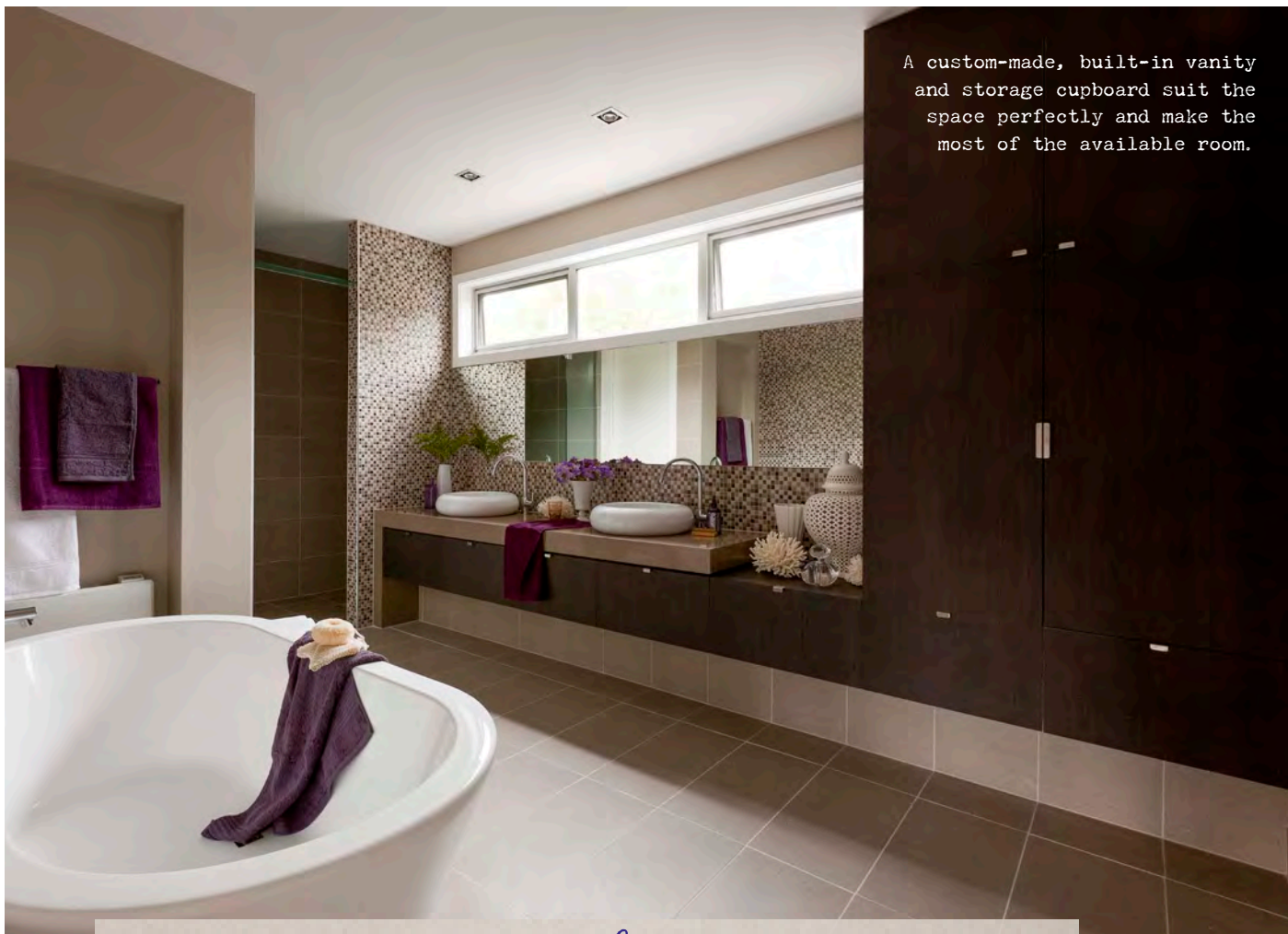
DAZZLING MOSAICS AND VIBRANT ACCESSORIES  
POP AGAINST STREAMLINED BUILT-IN CABINETRY

WORDS & STYLING RUTH WELSBY PHOTOGRAPHY MARCEL AUCAR

The ceramic drum stool is  
a water-friendly and stylish  
furniture choice by the bath.



01  
02  
03  
04  
05  
06  
07  
08  
09  
10  
11  
12  
13  
14  
15  
16  
17  
18  
19  
20  
21  
22  
23  
24  
25



A custom-made, built-in vanity and storage cupboard suit the space perfectly and make the most of the available room.

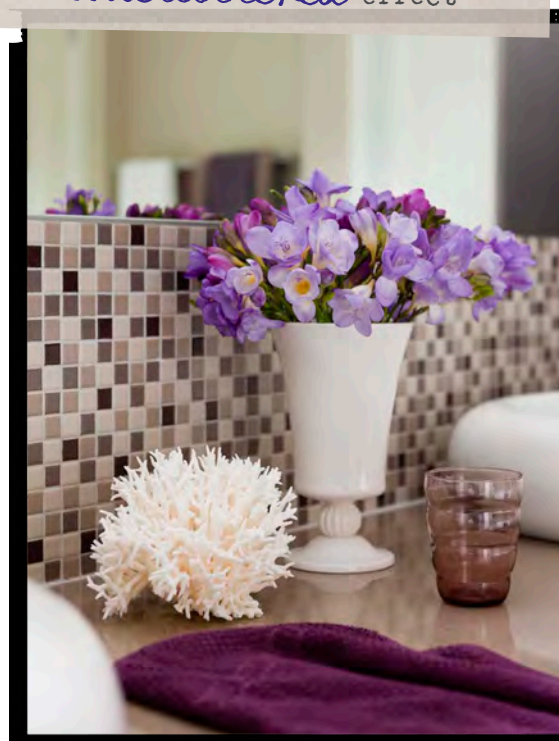
EXPERT TIP: Recessed wall *niches* for fixtures such as towel

rails and heating panels create an *uncluttered* effect

#### WITH PLENTY OF SPACE TO PLAY WITH IN LISA

and Paul's new bathroom, interior designer Carolyn Burns-McCrave aimed to create a lavish hotel-like retreat, with a glamorous colour scheme and luxurious fittings. Walls bedecked in eye-catching chocolate and taupe mosaic tiles produce a spectacularly intense finish, teamed with simple grey Entiva 'Casa' floor tiles for balance. Arranged horizontally, the large-format floor tiles help make the rectangular room appear wider.

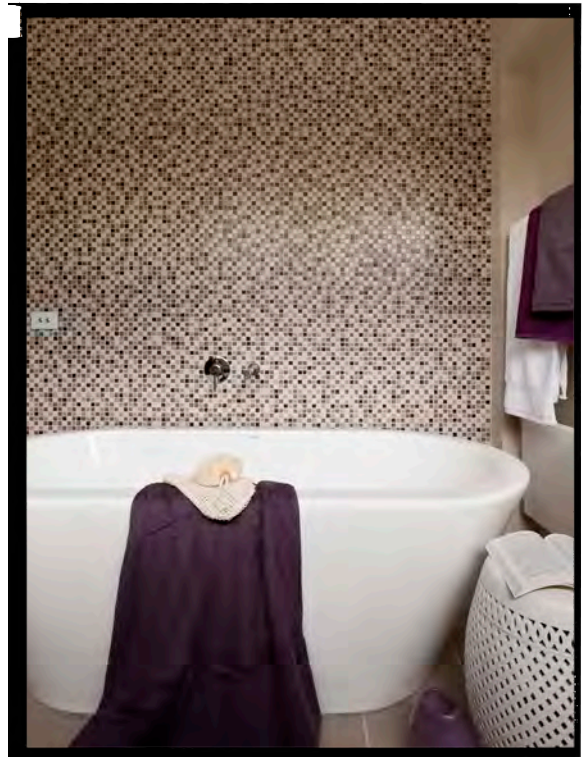
The sculptural curves of the bath, pebble-like basins and graceful swan-neck taps are complemented by the sharp lines of the wall-hung vanity unit, mirror and window. Coated in decadent Arcadian Oak veneer and topped with a slab of Caesarstone, the bespoke unit boasts ample under-counter storage despite its sleek and unobtrusive style. "By floating the joinery off the floor I could make the room feel wider," Carolyn explains. "The storage cupboard bookends the benchtop at one end and helps to visually balance the large walk-in shower at the other end." >







A slab of Caesarstone for the vanity top gives the bathroom a masculine edge.



## the details

**BASINS:** Try 'Allure', Marbletrend.

**BATH:** Kado 'Lure', Reece.

**BATH SPOUT:** Mizu 1500 series, Reece.


**COUNTERTOP:** Caesarstone 'Classico' in Ginger.

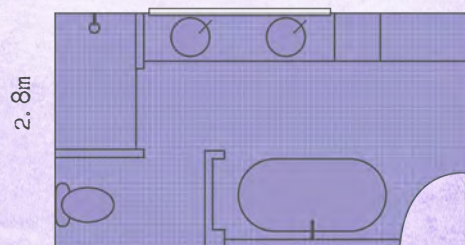
**PAINT:** Dulux Wash & Wear in Linseed.

**SHOWERHEAD AND RAIL:** Try Raymor 'Atlanta', Tradelink.

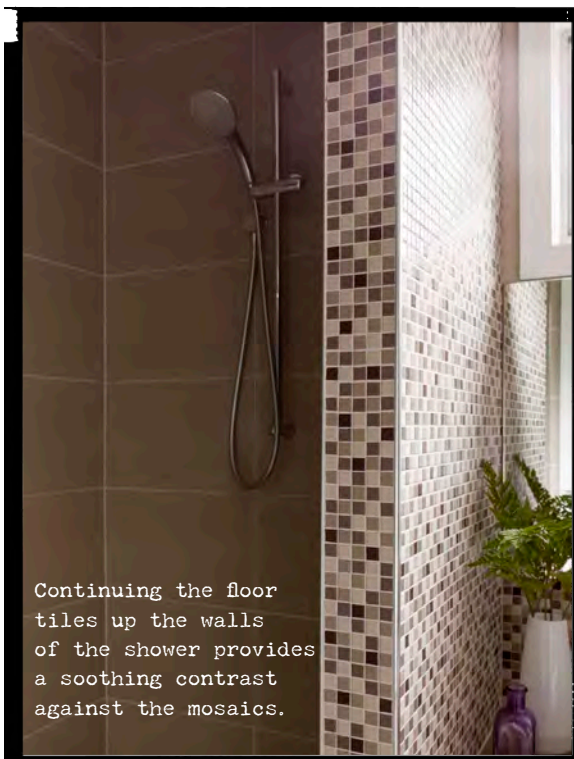
**TILES:** 'Mini Mix Storm' 300mm x 300mm mosaic tiles, Perini, on walls; Entiva 'Casa' tiles in Grey, Volare Concepts, on floor and shower walls.

**VANITY:** Navlam sandblasted timber veneer in Arcadian Oak, New Age Veneers.

**CONTACT:** Burns McCrave Design, (03) 9894 0586, burnsmcgrave.com.au. **Stockists, page 114.** 



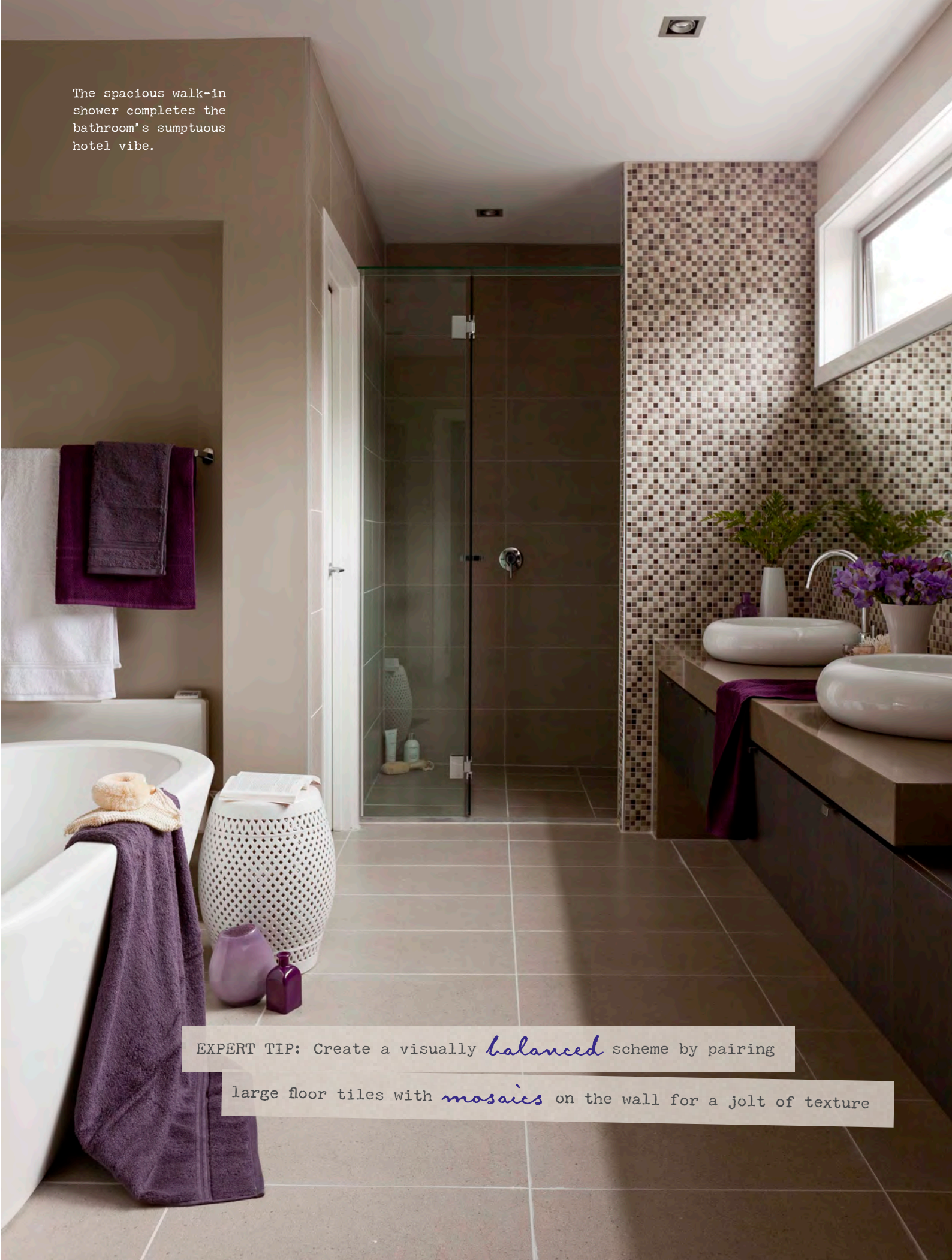
5.2m



Continuing the floor tiles up the walls of the shower provides a soothing contrast against the mosaics.



The spacious walk-in shower completes the bathroom's sumptuous hotel vibe.



EXPERT TIP: Create a visually *balanced* scheme by pairing

large floor tiles with *mosaics* on the wall for a jolt of texture