

home
beautiful

FREE
pull-out
DIY
PLANNER

BATHROOMS

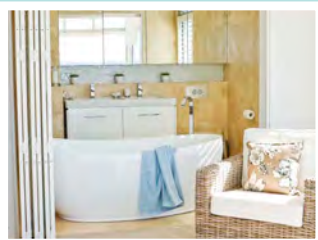
The essential guide to creating your dream bathroom

50 of the BEST Australian BATHROOMS

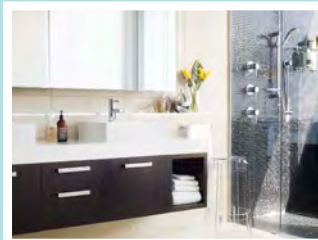
+ Basins & taps + Tiles
+ Vanity units + Baths + Floor plans

GLOBAL TRENDS

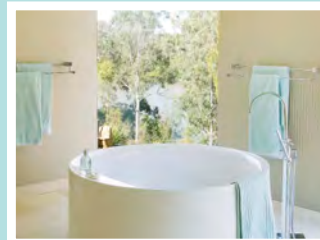
Style experts reveal the designs & ideas that will stand the test of time



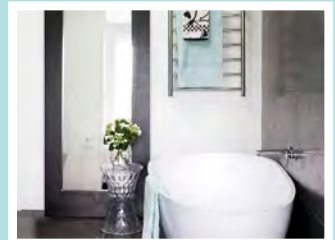
TRANQUIL OASIS



MODERN MONOCHROME



SERENE RETREAT



COMPACT CHIC



Home Beautiful
\$9.95 INCL GST

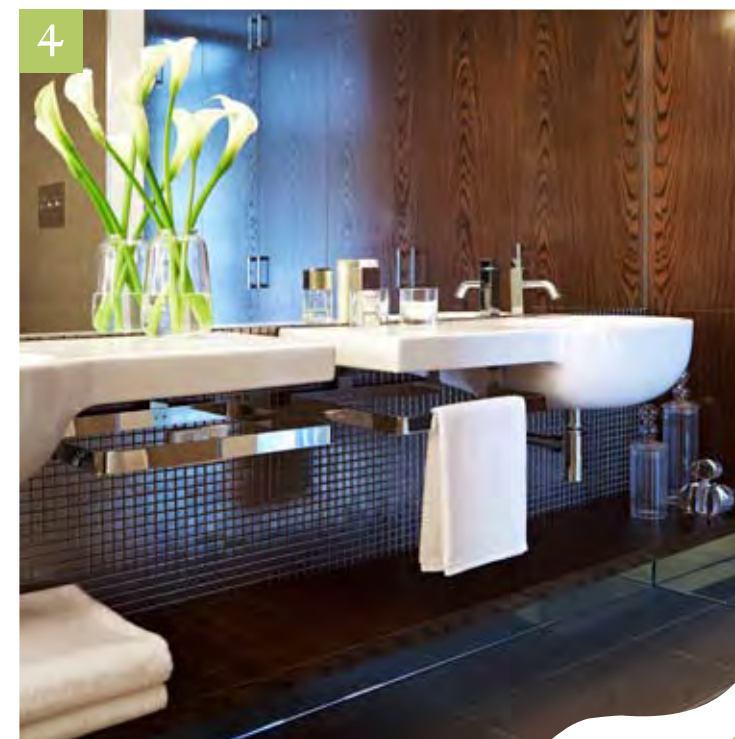
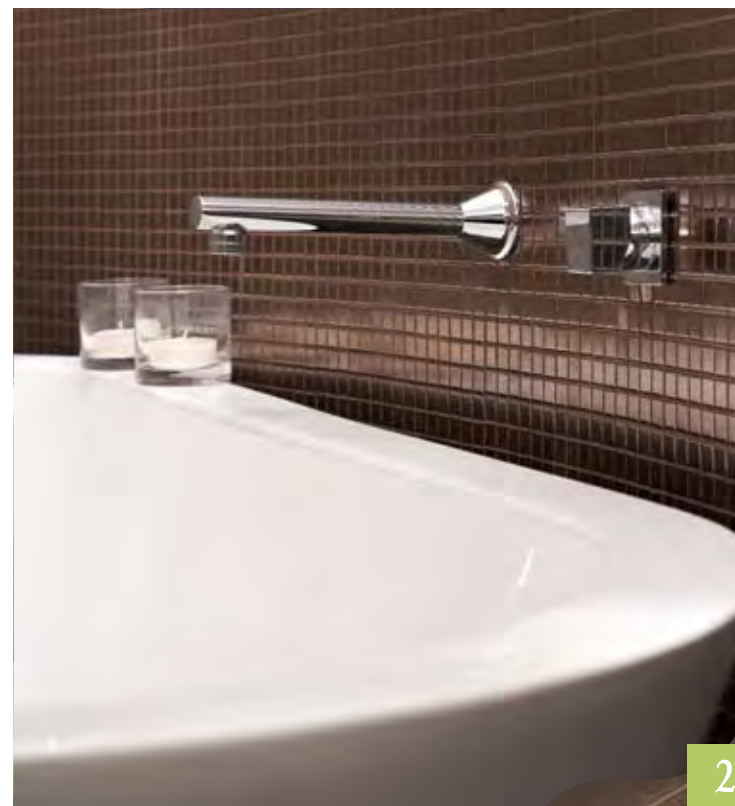
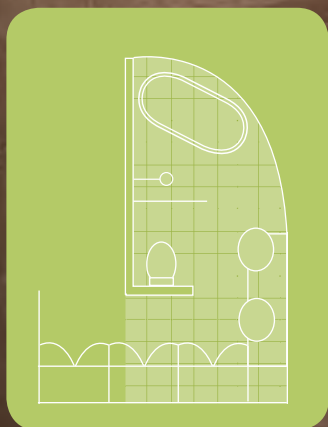
HOT CHOCOLATE

WITH A SMATTERING OF SPARKLE, THE ALLURING BACKDROP OF THIS GLAMOROUS BATHROOM STEALS THE SHOW

WORDS *Anna Koorey* STYLING *Ruth Welby* PHOTOGRAPHY *Rhiannon Slatter*

Design tip

Mosaics are the perfect tiling solution for curved spaces, and become a feature in themselves



1 Slide show

The unusual layout of this striking bathroom included a curved wall, which has been utilised to play up the best features of the space. The curve makes a sweeping gesture towards the statement freestanding bath, and has been tiled with shimmering mosaics that reflect the warm hues of the other walls and floor. The mosaics were also necessary to create a smooth effect, given the shape of the wall. The apex created by the curve has been transformed into a wet room, with an open shower separated from the rest of the space by a sheet of floor-to-ceiling plate glass.

2+3 Novel approach

Far from despairing at the lack of natural light in the room, the designers embraced it. It gave them the chance to devise a luxe, indulgent zone, with rich chocolate hues that envelop the area and reflective surfaces that prevent it from feeling too claustrophobic. Shimmering metallic tiles, a broad mirror and a glittering chandelier bounce light and shadows around the room, bringing a sense of romance to this inviting, intimate space.

4 Vanity flair

Open, uncluttered areas are the ultimate luxury, achieved here by doing away with the traditional vanity in favour of a pair of basins with expansive returns, and a single shelf, below. The area beneath the shelf is mirrored for a 'floating' effect, directing light into the shadows. The striking basins with their chunky towel rails form the focus, while the adjacent timber wardrobe provides ample storage without compromising the room's style.

DESIGN FILE

Expect to pay: \$25,000, including installation.

Basins: Pozzi Ginori '500 Series' wall basins, Reece.

Bath: Lanark 'Fusion' oval freestanding, Reece.

Lighting: Chandelier, Freedom. 'Camille 2' wall light, Beacon Lighting.

Shower: Nikles 'Techno 250', Reece.

Tapware: Sussex 'Meo' mixer outlets for basins and bath, Reece.

Tiles: Zurich polished porcelain (600mm square) in Ghetto on floor; metallic silver mosaics (19mm square) on walls, all Artistic Tile Design.

Toilet: Pozzi Ginori '500 Series' pan, Reece.

Contact: Carolyn Burns-McCrave of Retail Therapy Interior Design, 0425 801 130, www.retailtherapyid.com.au.

Stockists, page 160.

LARGE VASE AND TOWELS: ALL COUNTRY ROAD, 1800 801 911. SILIND VOTIVES AND GLAM CANISTERS: FREEDOM, 1300 135 588.

01
02
03
04
05
06
07
08
09
10
11
12
13
14
15
16
17
18
19
20
21
22
23
24
25
26
27
28
29
30
31
32
33
34
35
36
37
38
39
40
41
42
43
44
45
46
47
48
49
50